

UBE2E3 (UbcH9) [untagged]

E2 – Ubiquitin Conjugating Enzyme

Alternate Names: UbcH9, UbcM2, Ubiquitin conjugating enzyme UbcH9

Cat. No. 62-0022-100

Lot. No. 1463

Quantity: 100 µg

Storage: -70°C

FOR RESEARCH USE ONLY

NOT FOR USE IN HUMANS



CERTIFICATE OF ANALYSIS Page 1 of 2

Background

The enzymes of the ubiquitylation pathway play a pivotal role in a number of cellular processes including regulated and targeted proteasomal degradation of substrate proteins. Three classes of enzymes are involved in the process of ubiquitylation; activating enzymes (E1s), conjugating enzymes (E2s) and protein ligases (E3s). UBE2E3 is a member of the E2 ubiquitin-conjugating enzyme family and cloning of the gene was first described by Ito *et al.*, 1999. UBE2E3 binds to the RING-finger proteins ARA54 and RNF8, thought to act as E3 ligases in the ubiquitylation of nuclear proteins (Ito *et al.*, 2001). The epithelial Na⁺ channel (ENaC) is regulated by UBE2E3 and the E3 ligase NEDD4.2. UBE2E3 interacts with NEDD4.2 via its UBC domain and ubiquitylation of ENaC occurs by NEDD4.2 binding the PY motifs of its α , β and γ subunits (Debonneville and Staub, 2004). NEDD4.2 is a negative regulator of ENaC and deletions in the PY motifs of the α and γ subunits of ENaC cause Liddle's syndrome, an inherited form of hypertension. The loss of NEDD4.2 binding sites in mutated ENaC causes an increase in channel number at the cell surface and increased Na⁺ reabsorption by the distal nephron, resulting in hypertension (Abriel *et al.*, 1999).

Continued on page 2

Physical Characteristics

Species: human

Source: *E. coli* expression

Quantity: 100 µg

Concentration: 1 mg/ml

Formulation: 50 mM HEPES pH 7.5, 150 mM sodium chloride, 2 mM dithiothreitol, 10% glycerol

Molecular Weight: ~23 kDa

Purity: >98% by InstantBlue™ SDS-PAGE

Stability/Storage: 12 months at -70°C; aliquot as required

Protein Sequence:

GPLGSMSSDRQRSDDESPSTSSGSSDADQRD
PAAPEPEEQERKPSATQQKNTKLSSKT
TAKLSTSAKRIQKELAEITLDPPPNCSAGPK
GDNIYEWRSTILGPPGSVYEGGVFFLDITF
SSDYPFKPKVTFRTRIYHCNINSOGVI
CLDILKDNWSPALTISKVLLSICSLLTDCN
PADPLVGSIATQYLTNRAEHDRIARQWTKRYAT

The residues underlined remain after cleavage and removal of the purification tag.

UBE2E3 (regular text): Start **bold italics** (amino acid residues 1-207)

Accession number: NP_006348

Quality Assurance

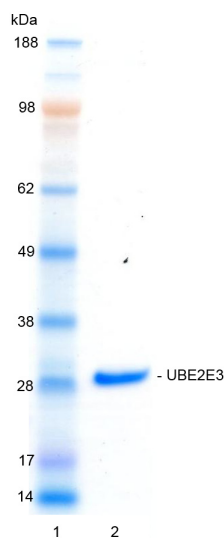
Purity:

4-12% gradient SDS-PAGE

InstantBlue™ staining

Lane 1: MW markers

Lane 2: 1 µg UBE2E3



Protein Identification:

Confirmed by mass spectrometry.

E2-Ubiquitin Thioester Loading Assay:

The activity of UBE2E3 was validated by loading E1 UBE1 activated ubiquitin onto the active cysteine of the UBE2E3 E2 enzyme via a transthiolation reaction. Incubation of the UBE1 and UBE2E3 enzymes in the presence of ubiquitin and ATP at 30°C was compared at two time points, T₀ and T₁₀ minutes. Sensitivity of the ubiquitin/UBE2E3 thioester bond to the reducing agent DTT was confirmed.



www.ubiquigent.com
Dundee, Scotland, UK

ORDERS / SALES SUPPORT

International: +1-617-245-0003
US Toll-Free: 1-888-4E1E2E3 (1-888-431-3233)
Email: sales.support@ubiquigent.com

UK HQ and TECHNICAL SUPPORT

International: +44 (0) 1382 381147 (9AM-5PM UTC)
US/Canada: +1-617-245-0020 (9AM-5PM UTC)
Email: tech.support@ubiquigent.com

Email services@ubiquigent.com for enquiries regarding compound profiling and/or custom assay development services.

© Ubiquigent 2011. Unless otherwise noted, Ubiquigent, Ubiquigent logo and all other trademarks are the property of Ubiquigent, Ltd.

Limited Terms of Use: For research use only. Not for use in humans or for diagnostics. Not for distribution or resale in any form, modification or derivative OR for use in providing services to a third party (e.g. screening or profiling) without the written permission of Ubiquigent, Ltd.

Lot-specific COA version tracker: v1.0.0

UBE2E3 (UbcH9) [untagged]

E2 – Ubiquitin Conjugating Enzyme

Alternate Names: UbcH9, UbcM2, Ubiquitin conjugating enzyme UbcH9

Cat. No. 62-0022-100
Lot. No. 1463

Quantity: 100 µg
Storage: -70°C



FOR RESEARCH USE ONLY

NOT FOR USE IN HUMANS

CERTIFICATE OF ANALYSIS Page 2 of 2

Background

Continued from page 1

References:

Abriel H, Loffing J, Rebhun JF, Pratt JH, Schild L, Horisberger JD, Rotin D, Staub O (1999) Defective regulation of the epithelial Na⁺ channel by Nedd4 in Liddle's syndrome. *J Clin Invest* **103**, 667-73.

Debonneville C, Staub O (2004) Participation of the ubiquitin-conjugating enzyme UBE2E3 in Nedd4-2-dependent regulation of the epithelial Na⁺ channel. *Mol Cell Biol* **24**, 2397-409.

Ito K, Adachi S, Iwakami R, Yasuda H, Muto Y, Seki N, Okano Y (2001) N-Terminally extended human ubiquitin-conjugating enzymes (E2s) mediate the ubiquitination of RING-finger proteins, ARA54 and RNF8. *Eur J Biochem* **268**, 2725-32.

Ito K, Kato S, Matsuda Y, Kimura M, Okano Y (1999) cDNA cloning, characterization, and chromosome mapping of UBE2E3 (alias UbcH9), encoding an N-terminally extended human ubiquitin-conjugating enzyme. *Cytogenet Cell Genet* **84**, 99-104.



www.ubiquigent.com
Dundee, Scotland, UK

ORDERS / SALES SUPPORT

International: +1-617-245-0003
US Toll-Free: 1-888-4E1E2E3 (1-888-431-3233)
Email: sales.support@ubiquigent.com

UK HQ and TECHNICAL SUPPORT

International: +44 (0) 1382 381147 (9AM-5PM UTC)
US/Canada: +1-617-245-0020 (9AM-5PM UTC)
Email: tech.support@ubiquigent.com

Email services@ubiquigent.com for enquiries regarding compound profiling and/or custom assay development services.

© Ubiquigent 2011. Unless otherwise noted, Ubiquigent, Ubiquigent logo and all other trademarks are the property of Ubiquigent, Ltd.

Limited Terms of Use: For research use only. Not for use in humans or for diagnostics. Not for distribution or resale in any form, modification or derivative OR for use in providing services to a third party (e.g. screening or profiling) without the written permission of Ubiquigent, Ltd.

Lot-specific COA version tracker: v1.0.0