

UBE2E2 (UbcH8) [6His-tagged]

E2 – Ubiquitin Conjugating Enzyme

Alternate Name: UbcH8

Cat. No. 62-0020-100

Lot. No. 1371

Quantity: 100 µg

Storage: -70°C



FOR RESEARCH USE ONLY

NOT FOR USE IN HUMANS

CERTIFICATE OF ANALYSIS - Page 1 of 2

Background

The enzymes of the ubiquitylation pathway play a pivotal role in a number of cellular processes including regulated and targeted proteosomal degradation of substrate proteins. Three classes of enzymes are involved in the process of ubiquitylation; activating enzymes (E1s), conjugating enzymes (E2s) and protein ligases (E3s). UBE2E2 is a member of the E2 ubiquitin-conjugating enzyme family and cloning of the human gene was first described by Kimura *et al.* (1997). The Ubc domain of UBE2E2 shares over 90% identity with human UBE2E1, mouse UbcM2, and *Drosophila* UbcD2 (Kimura *et al.*, 1997). UBE2E2 has been shown to ubiquitylate the E3 ligase E6AP by binding to its HECT domain (Kumar *et al.*, 1997). A yeast two hybrid screen identified two UBE2E2 binding proteins, UbcH7-Associated Protein (H7-AP1) and Human Homologue of *Drosophila* ARLadne (HHARI); both of these proteins are characterized by the presence of a RING finger and In Between RING finger (IBR) domains (Moynihan *et al.*, 1999). Studies using deletion mutants of UBE2E2 and two point mutants - ARA54 and C220S - and RNF8 C403S, have demonstrated that ARA54 and RNF8 ring finger proteins interact with the Ubc domain of UBE2E2 (Ito *et al.*, 2001). UBE2E2 binds directly to the BRCA1 RING motif of the human heterodimeric RING E3 ligase complex BRCA1-BARD1 and is active in causing autoubiquitylation *in vitro* (Christensen *et al.*, 2007). UBE2E2 has also been shown to bind the ubiquitin-protein ligase Parkin via its C-terminal ring-finger domain, resulting in ubiquitylation of the synaptic vesicle associated protein CDCrel-1 (Zhang *et al.*, 2000).

References:

Christensen DE, Brzovic PS, Klevit RE (2007) E2-BRCA1 RING interactions dictate synthesis of mono- or specific polyubiquitin chain linkages. *Nat Struct Mol Biol* **14**, 941-8.

Continued on page 2

Physical Characteristics

Species: human

Source: *E. coli* expression

Quantity: 100 µg

Concentration: 1 mg/ml

Formulation: 50 mM HEPES pH 7.5, 150 mM sodium chloride, 2 mM dithiothreitol, 10% glycerol

Molecular Weight: ~26 kDa

Purity: >95% by InstantBlue™ SDS-PAGE

Stability/Storage: 12 months at -70°C; aliquot as required

Protein Sequence:

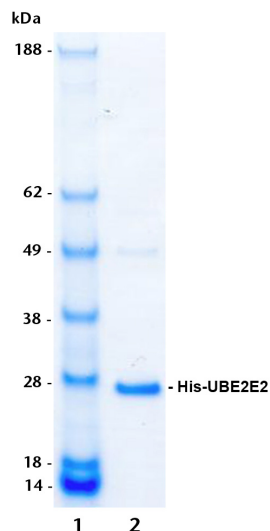
MGSSHHHHHHSSGLVPRGSHMASMTG
GQQMGRGS**M**STEAQRVDDSPSTSGSS
DGDQRESVQQEPEREQVQPKKKEGKISSK
TAAKLSTSAKRIQKELAEITLPPPNCAGPKGD
NIYWRSTILGPPGSVYEGGVFFLDITFSPDYP
FKPPKVTFRTRIIYHCNINSQGVICLDILKDNWS
PALTISKVLLSICSLLDENPADPLVGSIAATQYMT
NRAEHRMARQWTKRYAT

Tag (**bold text**): N-terminal His
Protease cleavage site: Thrombin (LVPR**▼**GS)
UBE2E2 (regular text): Start **bold italics** (amino acid residues 1-201)
Accession number: NP_689866.1

Quality Assurance

Purity:

4-12% gradient SDS-PAGE
InstantBlue™ staining
lane 1: MW markers
lane 2: 1 µg His-UBE2E2



Protein Identification:

Confirmed by mass spectrometry.

E2-Ubiquitin Thioester Loading Assay:

The activity of His-UBE2E2 was validated by loading E1 UBE1 activated ubiquitin onto the active cysteine of the His-UBE2E2 E2 enzyme via a transthiolation reaction. Incubation of the UBE1 and His-UBE2E2 enzymes in the presence of ubiquitin and ATP at 30°C was compared at two time points, T₀ and T₁₀ minutes. Sensitivity of the ubiquitin/His-UBE2E2 thioester bond to the reducing agent DTT was confirmed.



www.ubiquigent.com
Dundee, Scotland, UK

ORDERS / SALES SUPPORT

International: +1-617-245-0003
US Toll-Free: 1-888-4E1E2E3 (1-888-431-3233)
Email: sales.support@ubiquigent.com

UK HQ and TECHNICAL SUPPORT

International: +44 (0) 1382 381147 (9AM-5PM UTC)
US/Canada: +1-617-245-0020 (9AM-5PM UTC)
Email: tech.support@ubiquigent.com

Email services@ubiquigent.com for enquiries regarding compound profiling and/or custom assay development services.

© Ubiquigent 2011. Unless otherwise noted, Ubiquigent, Ubiquigent logo and all other trademarks are the property of Ubiquigent, Ltd.

Limited Terms of Use: For research use only. Not for use in humans or for diagnostics. Not for distribution or resale in any form, modification or derivative OR for use in providing services to a third party (e.g. screening or profiling) without the written permission of Ubiquigent, Ltd.

Lot-specific COA version tracker: v1.0.0

UBE2E2 (UbcH8) [6His-tagged]

E2 – Ubiquitin Conjugating Enzyme

Alternate Name: UbcH8

Cat. No. 62-0020-100
Lot. No. 1371

Quantity: 100 µg
Storage: -70°C



FOR RESEARCH USE ONLY

NOT FOR USE IN HUMANS

CERTIFICATE OF ANALYSIS - Page 2 of 2

Background

Continued from page 1

Ito K, Adachi S, Iwakami R, Yasuda H, Muto Y, Seki N, Okano Y (2001) N-Terminally extended human ubiquitin-conjugating enzymes (E2s) mediate the ubiquitination of RING-finger proteins, ARA54 and RNF8. *Eur J Biochem* **268**, 2725-32.

Kimura M, Hattori T, Matsuda Y, Yoshioka T, Sumi N, Umeda Y, Nakashima S, Okano Y (1997) cDNA cloning, characterization, and chromosome mapping of UBE2E2 encoding a human ubiquitin-conjugating E2 enzyme. *Cytogenet Cell Genet* **78**, 107-11.

Kumar S, Kao WH, Howley PM (1997) Physical interaction between specific E2 and Hect E3 enzymes determines functional cooperativity. *J Biol Chem* **272**, 13548-54.

Moynihan TP, Ardley HC, Nuber U, Rose SA, Jones PF, Markham AF, Scheffner M, Robinson PA (1999) The ubiquitin-conjugating enzymes UbcH7 and UbcH8 interact with RING finger/IBR motif-containing domains of HHAR1 and H7-AP1. *J Biol Chem* **274**, 30963-8.

Zhang Y, Gao J, Chung KK, Huang H, Dawson VL, Dawson TM (2000) Parkin functions as an E2-dependent ubiquitin-protein ligase and promotes the degradation of the synaptic vesicle-associated protein, CDCrel-1. *Proc Natl Acad Sci USA* **97**, 13354-9.



www.ubiquigent.com
Dundee, Scotland, UK

ORDERS / SALES SUPPORT

International: +1-617-245-0003
US Toll-Free: 1-888-4E1E2E3 (1-888-431-3233)
Email: sales.support@ubiquigent.com

UK HQ and TECHNICAL SUPPORT

International: +44 (0) 1382 381147 (9AM-5PM UTC)
US/Canada: +1-617-245-0020 (9AM-5PM UTC)
Email: tech.support@ubiquigent.com

Email services@ubiquigent.com for enquiries regarding compound profiling and/or custom assay development services.

© Ubiquigent 2011. Unless otherwise noted, Ubiquigent, Ubiquigent logo and all other trademarks are the property of Ubiquigent, Ltd.

Limited Terms of Use: For research use only. Not for use in humans or for diagnostics. Not for distribution or resale in any form, modification or derivative OR for use in providing services to a third party (e.g. screening or profiling) without the written permission of Ubiquigent, Ltd.

Lot-specific COA version tracker: v1.0.0