

UBE2W (Ubc16) [6His-tagged]

E2 – Ubiquitin Conjugating Enzyme

Alternate Names: FLJ11011

Cat. No. 62-0085-100
Lot. No. 30041

Quantity: 100 µg
Storage: -70°C

FOR RESEARCH USE ONLY

NOT FOR USE IN HUMANS



CERTIFICATE OF ANALYSIS Page 1 of 1

Background

The enzymes of the ubiquitylation pathway play a pivotal role in a number of cellular processes including the regulated and targeted proteasomal degradation of substrate proteins. Three classes of enzymes are involved in the process of ubiquitylation; activating enzymes (E1s), conjugating enzymes (E2s) and protein ligases (E3s). UBE2W is a member of the E2 conjugating enzyme family and cloning of the human gene was first described by Yin *et al.* (2006). UBE2W comprises 7 exons and there are two Nuclear Localisation Signals (NLS) located in the c-terminus of the UBC domain (Yin *et al.*, 2006). Interaction of UBE2W with the human heteromeric RING E3 BRCA1-BARD1 has been demonstrated using yeast two-hybrid screening. UBE2W binds directly to the RING motif of BRCA1 causing autoubiquitylation of BRCA1-BARD1 and monoubiquitylation of BRCA1 alone *in vitro* (Christensen *et al.*, 2007). UBE2W also interacts with UBE1 and the E3 ligase FANCL to monoubiquitylate FANCD2 *in vitro* (Alpi *et al.*, 2008)

References:

Alpi AF, Pace PE, Babu MM, Patel KJ (2008) Mechanistic insight into site-restricted monoubiquitination of FANCD2 by Ube2t, FANCL, and FANCI. *Mol Cell* **32**, 767-77.

Christensen DE, Brzovic PS, Klevit RE (2007) E2-BRCA1 RING interactions dictate synthesis of mono- or specific polyubiquitin chain linkages. *Nat Struct Mol Biol* **14**, 941-8.

Yin G, Ji C, Wu T, Shen Z, Xu X, Xie Y, Mao Y (2006) Cloning, characterization and subcellular localization of a gene encoding a human Ubiquitin-conjugating enzyme (E2) homologous to the Arabidopsis thaliana UBC-16 gene product. *Front Biosci* **11**, 1500-7.

Physical Characteristics

Species: human

Source: *E. coli* expression

Quantity: 100 µg

Concentration: 1 mg/ml

Formulation: 50 mM HEPES pH 7.5, 150 mM sodium chloride, 2 mM dithiothreitol, 10% glycerol

Molecular Weight: ~22.2 kDa

Purity: >95% by InstantBlue™ SDS-PAGE

Stability/Storage: 12 months at -70°C; aliquot as required

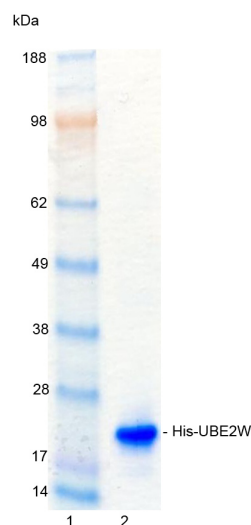
Protein Sequence:

M G S S H H H H H S S G L V P R G S H M A S M T G
G Q Q M G R G S M A S M Q T T G R R V E V W F P K R L Q K E L
L A L Q N D P P P G M T L N E K S V Q N S I T Q W I V D M E G A
P G T L Y E G E K F Q L L F K F S S R Y P F D S P Q V M F T
G E N I P V H P H V Y S N G H I C L S I L T E D W S P A L S
V Q S V C L S I I S M L S S C K E K R R P P D N S F Y V R T C
N K N P K K T K W W Y H D D T C

Tag (**bold text**): N-terminal His
Protease cleavage site: Thrombin (LVPR**▼**GS)
UBE2W (regular text): Start **bold italics** (amino acid residues 1-162)
Accession number: NP_001001481.1

Quality Assurance

Purity: 4-12% gradient SDS-PAGE InstantBlue™ staining
Lane 1: MW markers
Lane 2: 1 µg His-UBE2W



Protein Identification:

Confirmed by mass spectrometry.

E2-Ubiquitin Thioester Loading Assay:

The activity of His-UBE2W was validated by loading E1 UBE1 activated ubiquitin onto the active cysteine of the His-UBE2W E2 enzyme via a transthioesteration reaction. Incubation of the UBE1 and His-UBE2W enzymes in the presence of ubiquitin and ATP at 30°C was compared at two time points, T₀ and T₁₀ minutes. Sensitivity of the ubiquitin/His-UBE2W thioester bond to the reducing agent DTT was confirmed.



www.ubiquigent.com
Dundee, Scotland, UK

ORDERS / SALES SUPPORT

International: +1-617-245-0003
US Toll-Free: 1-888-4E1E2E3 (1-888-431-3233)
Email: sales.support@ubiquigent.com

UK HQ and TECHNICAL SUPPORT

International: +44 (0) 1382 381147 (9AM-5PM UTC)
US/Canada: +1-617-245-0020 (9AM-5PM UTC)
Email: tech.support@ubiquigent.com

Email services@ubiquigent.com for enquiries regarding compound profiling and/or custom assay development services.

© Ubiquigent 2013. Unless otherwise noted, Ubiquigent, Ubiquigent logo and all other trademarks are the property of Ubiquigent, Ltd.

Limited Terms of Use: For research use only. Not for use in humans or for diagnostics. Not for distribution or resale in any form, modification or derivative OR for use in providing services to a third party (e.g. screening or profiling) without the written permission of Ubiquigent, Ltd.

Lot-specific COA version tracker: v1.0.0