

# UBE2D1 (UbcH5a) [6His-tagged]

## E2 – Ubiquitin Conjugating Enzyme

Alternate Names: E2(17)KB 1, EC 6.3.2.19, SFT, Stimulator of Fe transport, homolog of UBC4/5, UbcH5, UbcH5A, Ubiquitin-conjugating enzyme E2-17 kDa 1, Ubiquitin-conjugating enzyme UbcH5A

**Cat. No.** 62-0008-100  
**Lot. No.** 1369

**Quantity:** 100 µg  
**Storage:** -70°C

FOR RESEARCH USE ONLY

NOT FOR USE IN HUMANS



**CERTIFICATE OF ANALYSIS**

### Background

The enzymes of the ubiquitylation pathway play a pivotal role in a number of cellular processes including regulated and targeted proteosomal degradation of substrate proteins. Three classes of enzymes are involved in the process of ubiquitylation; activating enzymes (E1s), conjugating enzymes (E2s) and protein ligases (E3s). UBE2D1 is a member of the E2 ubiquitin-conjugating enzyme family and cloning of the human gene was first described by Scheffner *et al.* (1994). UBE2D1 shares 89% sequence identity with its *Drosophila* homologue and mediates E6/UBE3A (E6AP)-induced ubiquitylation of p53 (Jensen *et al.*, 1995; Scheffner *et al.*, 1994). Ubiquitylation of the yeast PTS1 import receptor (pex5p) has been demonstrated in an *in vitro* assay in the presence of the human UBE2D1 in combination with the ring domain of the yeast E3 ligase pex10p (Williams *et al.*, 2008). Sequence encoding the stimulated Iron transport gene SFT overlaps with intron 7 and exon 6 of UBE2D1, and RT/PCR has shown significantly upregulated levels of UBE2D1 in livers of iron-overloaded patients with hereditary hemochromatosis (Gehrke *et al.*, 2003).

### References:

Gehrke SG, Riedel HD, Herrmann T, Hadaschik B, Bents K, Veltkamp C, Stremmel W (2003) UbcH5A, a member of human E2 ubiquitin-conjugating enzymes, is closely related to SFT, a stimulator of iron transport, and is up-regulated in hereditary hemochromatosis. *Blood* **101**, 3288-93.

Jensen JP, Bates PW, Yang M, Vierstra RD, Weissman AM (1995) Identification of a family of closely related human ubiquitin conjugating enzymes. *J Biol Chem* **270**, 30408-14.

Scheffner M, Huibregtse JM, Howley PM (1994) Identification of a human ubiquitin-conjugating enzyme that mediates the E6-AP-dependent ubiquitination of p53. *Proc Natl Acad Sci USA* **91**, 8797-801.

Williams C, van den Berg M, Geers E, Distel B (2008) Pex10p functions as an E3 ligase for the Ubc4p-dependent ubiquitination of Pex5p. *Biochem Biophys Res Commun* **374**, 620-4.

### Physical Characteristics

**Species:** human

**Source:** *E. coli* expression

**Quantity:** 100 µg

**Concentration:** 1 mg/ml

**Formulation:** 50 mM HEPES pH 7.5, 150 mM sodium chloride, 2 mM dithiothreitol, 10% glycerol

**Molecular Weight:** ~20 kDa

**Purity:** >98% by InstantBlue™ SDS-PAGE

**Stability/Storage:** 12 months at -70°C; aliquot as required

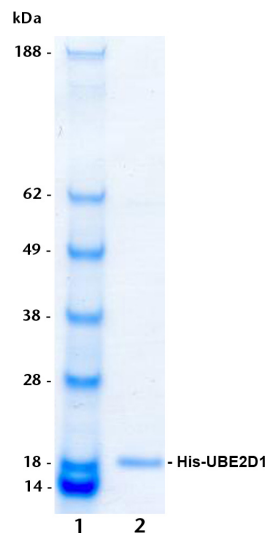
### Protein Sequence:

**MGSSHHHHHSSGLVPRGSHMASMTG**  
GQQMGRGSALKRIQKELSDLQRDPPAHCASAG  
PVGDDLFWQATIMGPPDSAYQGGVFFLT VH  
FPTDYPFKPPKIAFTTKIYHPNINSNGSICLDILR  
SQWSPALTVSKVLLSICSLLCDPNPDDPLVPD  
IAQIYKSDKEKYNRHAREWTQKYAM

Tag (**bold text**): N-terminal His  
Protease cleavage site: Thrombin (LVPR**▼**GS)  
UBE2D1 (regular text): Start **bold italics** (amino acid residues 2-147)  
Accession number: NP\_003329

### Quality Assurance

**Purity:**  
4-12% gradient SDS-PAGE  
InstantBlue™ staining  
lane 1: MW markers  
lane 2: 1 µg His-UBE2D1



### Protein Identification:

Confirmed by mass spectrometry.

### E2-Ubiquitin Thioester Loading Assay:

The activity of His-UBE2D1 was validated by loading E1 UBE1 activated ubiquitin onto the active cysteine of the His-UBE2D1 E2 enzyme via a transthiolation reaction. Incubation of the UBE1 and His-UBE2D1 enzymes in the presence of ubiquitin and ATP at 30°C was compared at two time points, T<sub>0</sub> and T<sub>10</sub> minutes. Sensitivity of the ubiquitin/His-UBE2D1 thioester bond to the reducing agent DTT was confirmed.



www.ubiquigent.com  
Dundee, Scotland, UK

### ORDERS / SALES SUPPORT

**International:** +1-617-245-0003  
**US Toll-Free:** 1-888-4E1E2E3 (1-888-431-3233)  
**Email:** sales.support@ubiquigent.com

### UK HQ and TECHNICAL SUPPORT

**International:** +44 (0) 1382 381147 (9AM-5PM UTC)  
**US/Canada:** +1-617-245-0020 (9AM-5PM UTC)  
**Email:** tech.support@ubiquigent.com

Email services@ubiquigent.com for enquiries regarding compound profiling and/or custom assay development services.

© Ubiquigent 2011. Unless otherwise noted, Ubiquigent, Ubiquigent logo and all other trademarks are the property of Ubiquigent, Ltd.

Limited Terms of Use: For research use only. Not for use in humans or for diagnostics. Not for distribution or resale in any form, modification or derivative OR for use in providing services to a third party (e.g. screening or profiling) without the written permission of Ubiquigent, Ltd.

Lot-specific COA version tracker: v1.0.0