

# UBE2R1 (UbcH3) [6His-tagged]

## E2 – Ubiquitin Conjugating Enzyme

Alternate Names: E2-CDC34, EC 6.3.2.19, Ubiquitin conjugating enzyme E2-32 kDa complementing

Cat. No. 62-0052-020

Lot. No. 1380

Quantity: 20 µg

Storage: -70°C

FOR RESEARCH USE ONLY

NOT FOR USE IN HUMANS



CERTIFICATE OF ANALYSIS Page 1 of 2

### Background

The enzymes of the ubiquitylation pathway play a pivotal role in a number of cellular processes including regulated and targeted proteasomal degradation of substrate proteins. Three classes of enzymes are involved in the process of ubiquitylation; activating enzymes (E1s), conjugating enzymes (E2s) and protein ligases (E3s). UBE2R1 is a member of the E2 conjugating enzyme family and cloning of the human gene was first described by Plon *et al.* (1993). UBE2R1 plays an essential role in promoting the G1-S-phase transition of the eukaryotic cell cycle; it is phosphorylated on serine residues (S203, S222 and S231) present in the acidic tail domain a, region critical for its cell cycle function. Casein Kinase type II (CK2) mediated phosphorylation of UBE2R1 increases ubiquitylation of Sic-1 in the presence of the E3 ligase S-phase kinase-associated protein 1/Cullin/F-box/Cdc4 (SCFCdc4) during cell cycle progression (Sadowski *et al.*, 2007). Specific binding of CK2 phosphorylated UBE2R1 to beta-TRCP ( $\beta$ -TRCP) - the substrate recognition unit of the SCF ligase - enhances degradation of its substrate beta-catenin (Semplici *et al.*, 2002). UBE2R1 also catalyzes polyubiquitylation of a substrate recruited by the Skp1-Cullin 1-F-box protein-ROC1 E3 ubiquitin ligase. Downregulation of UBE2R1 following let-7 over expression in primary fibro-

### Physical Characteristics

**Species:** human

**Source:** *E. coli* expression

**Quantity:** 20 µg

**Concentration:** 1 mg/ml

**Formulation:** 50 mM HEPES pH 7.5, 150 mM sodium chloride, 2 mM dithiothreitol, 10% glycerol

**Molecular Weight:** ~30 kDa

**Purity:** >80% by InstantBlue™ SDS-PAGE

**Stability/Storage:** 12 months at -70°C; aliquot as required

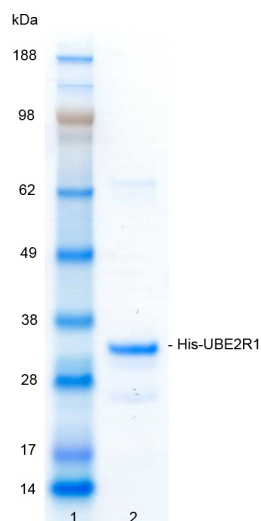
### Protein Sequence:

**M G S S H H H H H S S G** L V P R G S H M A S M T G  
G Q Q M G R G S A R P L V P S S Q K A L L L E L K  
G L Q E E P V E G F R V T L V D E G D L Y N W E V A I F G P  
P N T Y Y E G G Y F K A R L K F P I D Y P Y S P P A F R F L T K  
M W H P N I Y E T G D V C I S I L H P P V D D P Q S G E L P S  
E R W N P T Q N V R T I L L S V I S L L N E P N T F S P A N V  
D A S V M Y R K W K E S K G K D R E Y T D I I R K Q V L G T K V  
D A E R D G V K V P T T L A E Y C V K T K A P A P D E G S D L  
F Y D D Y Y E D G E V E E E A D S C F G D D E D D S G T E E S

Tag (**bold text**): N-terminal His  
Protease cleavage site: Thrombin (LVPR▼GS)  
UBE2R1 (regular text): Start **bold italics** (amino acid residues 2-236)  
Accession number: NP\_004350

### Quality Assurance

**Purity:** 4-12% gradient SDS-PAGE InstantBlue™ staining  
Lane 1: MW markers  
Lane 2: 1 µg His-UBE2R1



### Protein Identification:

Confirmed by mass spectrometry.

### E2-Ubiquitin Thioester Loading Assay:

The activity of His-UBE2R1 was validated by loading E1 UBE1 activated ubiquitin onto the active cysteine of the His-UBE2R1 E2 enzyme via a transthiolation reaction. Incubation of the UBE1 and His-UBE2R1 enzymes in the presence of ubiquitin and ATP at 30°C was compared at two time points, T<sub>0</sub> and T<sub>10</sub> minutes. The sensitivity of this ubiquitin/His-UBE2R1 thioester bond to the reducing agent DTT was confirmed.

Continued on page 2



www.ubiquigent.com  
Dundee, Scotland, UK

### ORDERS / SALES SUPPORT

International: +1-617-245-0003  
US Toll-Free: 1-888-4E1E2E3 (1-888-431-3233)  
Email: sales.support@ubiquigent.com

### UK HQ and TECHNICAL SUPPORT

International: +44 (0) 1382 381147 (9AM-5PM UTC)  
US/Canada: +1-617-245-0020 (9AM-5PM UTC)  
Email: tech.support@ubiquigent.com

Email services@ubiquigent.com for enquiries regarding compound profiling and/or custom assay development services.

© Ubiquigent 2011. Unless otherwise noted, Ubiquigent, Ubiquigent logo and all other trademarks are the property of Ubiquigent, Ltd.

Limited Terms of Use: For research use only. Not for use in humans or for diagnostics. Not for distribution or resale in any form, modification or derivative OR for use in providing services to a third party (e.g. screening or profiling) without the written permission of Ubiquigent, Ltd.

Lot-specific COA version tracker: v1.0.0

# UBE2R1 (UbcH3) [6His-tagged]

## E2 – Ubiquitin Conjugating Enzyme

**Alternate Names:** E2-CDC34, EC 6.3.2.19, Ubiquitin conjugating enzyme E2-32 kDa complementing

**Cat. No.** 62-0052-020  
**Lot. No.** 1380

**Quantity:** 20 µg  
**Storage:** -70°C



FOR RESEARCH USE ONLY

NOT FOR USE IN HUMANS

CERTIFICATE OF ANALYSIS Page 2 of 2

## Background

*Continued from page 1*

blasts, results in reduced SCF activity, stabilization of the Wee1 kinase, and an increased fraction of the cells in G(2)/M (Legesse-Miller *et al.*, 2009).

### References:

Legesse-Miller A, Elemento O, Pfau SJ, Forman JJ, Tavazoie S, Collier HA (2009) let-7 Overexpression leads to an increased fraction of cells in G2/M, direct down-regulation of Cdc34, and stabilization of Wee1 kinase in primary fibroblasts. *J Biol Chem* **284**, 6605-9.

Plon SE, Leppig KA, Do HN, Groudine M (1993) Cloning of the human homolog of the CDC34 cell cycle gene by complementation in yeast. *Proc Natl Acad Sci USA* **90**, 10484-8.

Sadowski M, Mawson A, Baker R, Sarcevic B (2007) Cdc34 C-terminal tail phosphorylation regulates Skp1/cullin/F-box (SCF)-mediated ubiquitination and cell cycle progression. *Biochem J* **405**, 569-81.

Semplici F, Meggio F, Pinna LA, Oliviero S (2002) CK2-dependent phosphorylation of the E2 ubiquitin conjugating enzyme UBC3B induces its interaction with beta-TrCP and enhances beta-catenin degradation. *Oncogene* **21**, 3978-87.



[www.ubiquigent.com](http://www.ubiquigent.com)  
Dundee, Scotland, UK

### ORDERS / SALES SUPPORT

**International:** +1-617-245-0003  
**US Toll-Free:** 1-888-4E1E2E3 (1-888-431-3233)  
**Email:** [sales.support@ubiquigent.com](mailto:sales.support@ubiquigent.com)

### UK HQ and TECHNICAL SUPPORT

**International:** +44 (0) 1382 381147 (9AM-5PM UTC)  
**US/Canada:** +1-617-245-0020 (9AM-5PM UTC)  
**Email:** [tech.support@ubiquigent.com](mailto:tech.support@ubiquigent.com)

Email [services@ubiquigent.com](mailto:services@ubiquigent.com) for enquiries regarding compound profiling and/or custom assay development services.

© Ubiquigent 2011. Unless otherwise noted, Ubiquigent, Ubiquigent logo and all other trademarks are the property of Ubiquigent, Ltd.

**Limited Terms of Use:** For research use only. Not for use in humans or for diagnostics. Not for distribution or resale in any form, modification or derivative OR for use in providing services to a third party (e.g. screening or profiling) without the written permission of Ubiquigent, Ltd.

Lot-specific COA version tracker: v1.0.0