

UBE2D4 (UbcH5d) [GST-tagged]

E2 – Ubiquitin Conjugating Enzyme

Alternate Name: LOC51619 protein, UbcH5d

Cat. No. 62-0016-020
Lot. No. 1390

Quantity: 20 µg
Storage: -70°C

FOR RESEARCH USE ONLY

NOT FOR USE IN HUMANS



CERTIFICATE OF ANALYSIS

Background

The enzymes of the ubiquitylation pathway play a pivotal role in a number of cellular processes including regulated and targeted proteosomal degradation of substrate proteins. Three classes of enzymes are involved in the process of ubiquitylation; activating enzymes (E1s), conjugating enzymes (E2s) and protein ligases (E3s). UBE2D4 is a member of the E2 ubiquitin-conjugating enzyme family and the human gene was first described by Colland *et al.* (2004).

Reference:

Colland F, Jacq X, Trouplin V, Mouglin C, Groizeleau C, Hamburger A, Meil A, Wojcik A, Legrain P, Gauthier J (2004) Functional proteomics mapping of a human signaling pathway. *Genome Res* 14, 1324-32.

Physical Characteristics

Species: human

Source: *E. coli* expression

Quantity: 20 µg

Concentration: 1 mg/ml

Formulation: 50 mM HEPES pH 7.5, 150 mM sodium chloride, 2 mM dithiothreitol, 10% glycerol

Molecular Weight: ~44 kDa

Purity: >98% by InstantBlue™ SDS-PAGE

Stability/Storage: 12 months at -70°C; aliquot as required

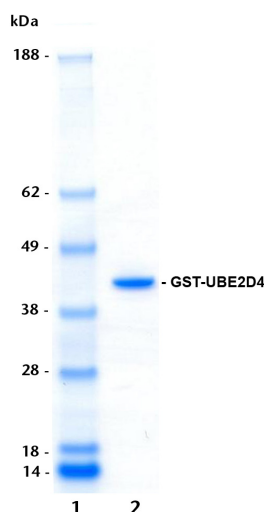
Protein Sequence:

MSPILGYWKIKGLVQPTRLLEYLEEKYEEH
LYERDEGDKWRNKKFELGLEFPNLPYYIDGD
VKLTQSMAIIRYIADKHNMLGGCPKER
AEISMLEGAVLDIRYGVSRAYSKDFETLKVD
FLSKLPEMLKMFEDRLCHKTYLNGDHTHP
DFMLYDALDVVLYMDPMCLDAFPKLVCFK
KRIEAIPIQIDKYLKSSKYIAWPLQGQATFG
GGDHPPKSDLEVLFGQPLGSPGIPGSTRAAA
MALKRIQKELTDLQRPPAQSAGPVGDDLF
HWQATIMGPNDSFYQGGVFFLTIHFPTDYP
FKPPKVAFTTKIYHPNINSNGSICLDILRSQWS
PALTYSKVLISICLLCDPNPDDPLVPEIAHTYKA
DREKYNRLAREWTQKYAM

Tag (**bold text**): N-terminal glutathione-S-transferase (GST)
Protease cleavage site: PreScission™ (LEVLFGQ▼GP)
UBE2D4 (regular text): Start **bold italics** (amino acid residues 1-147)
Accession number: NP_057067

Quality Assurance

Purity:
4-12% gradient SDS-PAGE
InstantBlue™ staining
lane 1: MW markers
lane 2: 1 µg GST-UBE2D4



Protein Identification:

Confirmed by mass spectrometry.

E2-Ubiquitin Thioester Loading Assay:

The activity of GST-UBE2D4 was validated by loading E1 UBE1 activated ubiquitin onto the active cysteine of the GST-UBE2D4 E2 enzyme via a transthiolation reaction. Incubation of the UBE1 and GST-UBE2D4 enzymes in the presence of ubiquitin and ATP at 30°C was compared at two time points, T₀ and T₁₀ minutes. Sensitivity of the ubiquitin/GST-UBE2D4 thioester bond to the reducing agent DTT was confirmed.



www.ubiquigent.com
Dundee, Scotland, UK

ORDERS / SALES SUPPORT

International: +1-617-245-0003
US Toll-Free: 1-888-4E1E2E3 (1-888-431-3233)
Email: sales.support@ubiquigent.com

UK HQ and TECHNICAL SUPPORT

International: +44 (0) 1382 381147 (9AM-5PM UTC)
US/Canada: +1-617-245-0020 (9AM-5PM UTC)
Email: tech.support@ubiquigent.com

Email services@ubiquigent.com for enquiries regarding compound profiling and/or custom assay development services.

© Ubiquigent 2011. Unless otherwise noted, Ubiquigent, Ubiquigent logo and all other trademarks are the property of Ubiquigent, Ltd.

Limited Terms of Use: For research use only. Not for use in humans or for diagnostics. Not for distribution or resale in any form, modification or derivative OR for use in providing services to a third party (e.g. screening or profiling) without the written permission of Ubiquigent, Ltd.

Lot-specific COA version tracker: v1.0.0