

UBE2Q2 [GST-tagged]

E2 – Ubiquitin Conjugating Enzyme

Alternate Names: DKFZp762C143, EC 6.3.2.19, Ubiquitin carrier protein Q2, Ubiquitin-protein ligase Q2

Cat. No. **62-0089-100**
Lot. No. **1841**

Quantity: 100 µg
Storage: -70°C

FOR RESEARCH USE ONLY

NOT FOR USE IN HUMANS



CERTIFICATE OF ANALYSIS Page 1 of 2

Background

The enzymes of the ubiquitylation pathway play a pivotal role in a number of cellular processes including the regulated and targeted proteasomal degradation of substrate proteins. Three classes of enzymes are involved in the process of ubiquitylation; activating enzymes (E1s), conjugating enzymes (E2s) and protein ligases (E3s). UBE2Q2 is a member of the E2 conjugating enzyme family. The cloning of human UBE2Q2 was first described by Crawford and Piwnicka-Worms. (2001). UBE2Q2 has been found to be up-regulated in 85% of head and neck squamous cell carcinoma tumours, with an increase of 2.4-fold compared to normal tissue. Immunohistochemistry and in situ hybridization analysis on tumour tissue sections has revealed strong signals in the tumour cell islets, invasive epithelia, and dysplastic regions (Seghatoleslam *et al.*, 2006). UBE2Q2 has been identified as a novel oncosuppressor that inhibits tumour growth and it is thought it could function as a novel diagnostic tool and potential therapeutic target for head and neck squamous cell carcinoma (Maeda *et al.*, 2009). UBE2Q2 may play a role in cytoskeleton structure and regulation, as actin and 6 actin-binding proteins have been shown to interact with UBE2Q2 (Seghatoleslam *et al.*, 2006). Inhibition of UBE2Q2 following treatment of HeLa cells with Microtubule Inhibiting Agent (MIA) causes mitotic

Continued on page 2

Physical Characteristics

Species: human

Source: *E. coli* expression

Quantity: 100 µg

Concentration: 1 mg/ml

Formulation: 50 mM HEPES pH 7.5,
150 mM sodium chloride, 2 mM
dithiothreitol, 10% glycerol

Molecular Weight: ~70 kDa

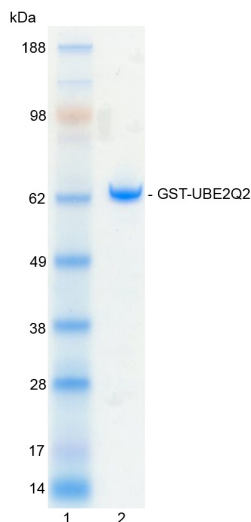
Purity: >98% by InstantBlue™ SDS-PAGE

Stability/Storage: 12 months at -70°C;
aliquot as required

Protein Sequence: Please see page 2

Quality Assurance

Purity:
4-12% gradient SDS-PAGE
InstantBlue™ staining
Lane 1: MW markers
Lane 2: 1 µg GST-UBE2Q2



Protein Identification:
Confirmed by mass spectrometry.

E2-Ubiquitin Thioester Loading Assay:
The activity of GST-UBE2Q2 was validated by loading E1 UBE1 activated ubiquitin onto the active cysteine of the GST-UBE2Q2 E2 enzyme via a transthiolation reaction. Incubation of the UBE1 and GST-UBE2Q2 enzymes in the presence of ubiquitin and ATP at 30°C was compared at two time points, T₀ and T₁₀ minutes. Sensitivity of the ubiquitin/GST-UBE2Q2 thioester bond to the reducing agent DTT was confirmed.



www.ubiquigent.com
Dundee, Scotland, UK

ORDERS / SALES SUPPORT

International: +1-617-245-0003
US Toll-Free: 1-888-4E1E2E3 (1-888-431-3233)
Email: sales.support@ubiquigent.com

UK HQ and TECHNICAL SUPPORT

International: +44 (0) 1382 381147 (9AM-5PM UTC)
US/Canada: +1-617-245-0020 (9AM-5PM UTC)
Email: tech.support@ubiquigent.com

Email services@ubiquigent.com for enquiries regarding compound profiling and/or custom assay development services.

© Ubiquigent 2011. Unless otherwise noted, Ubiquigent, Ubiquigent logo and all other trademarks are the property of Ubiquigent, Ltd.

Limited Terms of Use: For research use only. Not for use in humans or for diagnostics. Not for distribution or resale in any form, modification or derivative OR for use in providing services to a third party (e.g. screening or profiling) without the written permission of Ubiquigent, Ltd.

Lot-specific COA version tracker: v1.0.0

UBE2Q2 [GST-tagged]

E2 – Ubiquitin Conjugating Enzyme

Alternate Names: DKFZp762C143, EC 6.3.2.19, Ubiquitin carrier protein Q2, Ubiquitin-protein ligase Q2

Cat. No. **62-0089-100**
Lot. No. **1841**

Quantity: 100 µg
Storage: -70°C



FOR RESEARCH USE ONLY

NOT FOR USE IN HUMANS

CERTIFICATE OF ANALYSIS Page 2 of 2

Background

Continued from page 1

arrest and increased cytotoxicity, effects only observed in the absence of MIA suggesting UBE2Q2 is only involved in this response rather than having a more general role in mitosis (Banerjee *et al.*, 2007).

References:

Banerjee S, Brooks WS, Crawford DF (2007) Inactivation of the ubiquitin conjugating enzyme UBE2Q2 causes a prophase arrest and enhanced apoptosis in response to microtubule inhibiting agents. *Oncogene* **26**, 6509-17.

Crawford DF, Piwnica-Worms H (2001) The G(2) DNA damage checkpoint delays expression of genes encoding mitotic regulators. *J Biol Chem* **276**, 37166-77.

Maeda H, Miyajima N, Kano S, Tsukiyama T, Okumura F, Fukuda S, Hatakeyama S (2009) Ubiquitin-conjugating enzyme UBE2Q2 suppresses cell proliferation and is down-regulated in recurrent head and neck cancer. *Mol Cancer Res* **7**, 1553-62.

Seghatoleslam A, Zambrano A, Millon R, Ganguli G, Argentinini M, Cromer A, Abecassis J, Wasylyk B (2006) Analysis of a novel human gene, LOC92912, over-expressed in hypopharyngeal tumours. *Biochem Biophys Res Commun* **339**, 422-9.

Physical Characteristics

Continued from page 1

Protein Sequence:

MSPILGYWIKGLVQPTRLLLEYLEEKYEEL
LYERDEGDKWRNKKFELGLEFPNLPYYIDGD
VKLTQSMAIIRYIADKHNMLGGCPKERAESMLE
GAVLDIRYGVSRIAYSKDFETLKVDFLSKLPEM
LKMFEDRLCHKTYLNGDHVTHPDFMLYDALDV
VLYMDPMCLDAFPKLVCFKKRIEAIPOIDKY
LKSSKYIAWPLQGWQATFGGGDHPPKSDLEV
LFQGPLGSMVSVGLKAEKFLASIFDKNHER
FRIVSWKLDLHCQFLVPOQGSPhSLPPPLTLH
CNITESYPPSSPIWVFDSEDPNLTSLERLEDT
KNNNLLRQQLKWLICELCSLYNLPKHLDVEMLDQ
PLPTGQNGTTEVETSEEEEEEMAEIEDLD
HYEMKEEPISGKKSEDEGIEKENLAILEKIRK
TQRQDHLNGAVSGSVQASDRMLMKELRDIYR
SQSYKTGIYSVELINDSLYDWHVKLQKVDPD
SPLHSDLQILKEKEGIEYILLNFSFKDNFPFDP
PFVRVVLVLSGGYVLGGGALCMELLTKQGWS
SAYSIESVIMQINATLVK GKARVQFGANKNQYN
LARAQQSYNSIVQIHEKNGWYTPPKEDG

Tag (**bold text**): N-terminal GST
Protease cleavage site: PreScission™ (LEVLQ▼GP)
UBE2Q2 (regular text): Start **bold italics** (amino acid residues 1-375)
Accession number: NP_775740



www.ubiquigent.com
Dundee, Scotland, UK

ORDERS / SALES SUPPORT

International: +1-617-245-0003
US Toll-Free: 1-888-4E1E2E3 (1-888-431-3233)
Email: sales.support@ubiquigent.com

UK HQ and TECHNICAL SUPPORT

International: +44 (0) 1382 381147 (9AM-5PM UTC)
US/Canada: +1-617-245-0020 (9AM-5PM UTC)
Email: tech.support@ubiquigent.com

Email services@ubiquigent.com for enquiries regarding compound profiling and/or custom assay development services.

© Ubiquigent 2011. Unless otherwise noted, Ubiquigent, Ubiquigent logo and all other trademarks are the property of Ubiquigent, Ltd.

Limited Terms of Use: For research use only. Not for use in humans or for diagnostics. Not for distribution or resale in any form, modification or derivative OR for use in providing services to a third party (e.g. screening or profiling) without the written permission of Ubiquigent, Ltd.

Lot-specific COA version tracker: v1.0.0