

UBE2Z (USE1) [GST-tagged]

E2 - FAT10 or Ubiquitin Conjugating Enzyme

Alternate Names: UBA6-Specific E2; USE1

Cat. No. 62-0060-020
Lot. No. 1418

Quantity: 20 µg
Storage: -70°C

FOR RESEARCH USE ONLY

NOT FOR USE IN HUMANS



CERTIFICATE OF ANALYSIS Page 1 of 2

Background

The enzymes of the FATylation pathway play a pivotal role in a number of cellular processes including regulated and targeted proteasomal degradation of ubiquitylated substrate proteins (Buchsbau *et al.*, 2011). Three classes of enzymes are involved in the process of FATylation; the activating enzyme Uba6, conjugating enzymes (E2s) and protein ligases (E3s). UBE2Z is a member of the E2 conjugating enzyme family and cloning of the human gene was first described by Gu *et al.* (2007) and Jin *et al.* (2007). UBE2Z is widely expressed in human tissues and expression is particularly high in the placenta, pancreas, spleen and testis (Gu *et al.*, 2007). UBE2Z has been identified as an interaction partner of FAT10. FAT10 can be transferred from Uba6 to UBE2Z *in vitro* and both FAT10 and UBE2Z have been co-immunoprecipitated from intact cells. Down regulation of UBE2Z by siRNA resulted in a strong reduction of endogenous conjugate formation suggesting UBE2Z is the major E2 conjugating enzyme in the FAT10 cascade (Aichem *et al.*, 2010).

References:

Aichem, A., C. Pelzer, *et al.* (2010) USE1 is a bispecific conjugating enzyme for ubiquitin and FAT10, which FAT10ylates itself *in cis*. *Nat Commun* 1: 13.

Buchsbau, S., B. Bercovich, *et al.* (2011) FAT10 is a proteasomal degradation signal which is itself regulated by ubiquitination. *Mol Biol Cell*. (in press)

Gu, X., F. Zhao, *et al.* (2007) Cloning and characterization of a gene encoding the human putative ubiquitin conjugating enzyme E2Z (UBE2Z). *Mol Biol Rep* 34(3): 183-8.

Jin, J., X. Li, *et al.* (2007) Dual E1 activation systems for ubiquitin differentially regulate E2 enzyme charging. *Nature* 447(7148): 1135-8.

Physical Characteristics

Species: human

Source: *E. coli* expression

Quantity: 20 µg

Concentration: 1 mg/ml

Formulation: 50 mM HEPES pH 7.5,
150 mM sodium chloride, 2 mM
dithiothreitol, 10% glycerol

Molecular Weight: ~65 kDa

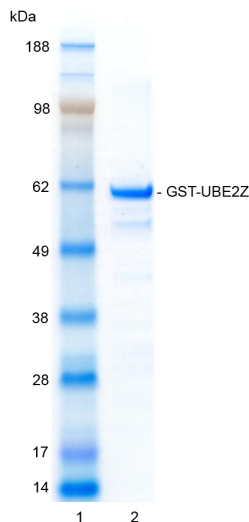
Purity: >85% by InstantBlue™ SDS-PAGE

Stability/Storage: 12 months at -70°C;
aliquot as required

Protein Sequence: Please see page 2

Quality Assurance

Purity:
4-12% gradient SDS-PAGE
InstantBlue™ staining
Lane 1: MW markers
Lane 2: 1 µg GST-UBE2Z



Protein Identification:

Confirmed by mass spectrometry.

E2-Ubiquitin Thioester Loading Assay:

The activity of GST-UBE2Z was validated by loading E1 Uba6 activated ubiquitin onto the active cysteine of the GST-UBE2Z E2 enzyme via a transthioesteration reaction. Incubation of the Uba6 and GST-UBE2Z enzymes in the presence of ubiquitin and ATP at 30°C was compared at two time points, T₀ and T₁₀ minutes. Under these conditions tested no GST-UBE2Z/ubiquitin thioester loading was observed.



www.ubiquigent.com
Dundee, Scotland, UK

ORDERS / SALES SUPPORT

International: +1-617-245-0003
US Toll-Free: 1-888-4E1E2E3 (1-888-431-3233)
Email: sales.support@ubiquigent.com

UK HQ and TECHNICAL SUPPORT

International: +44 (0) 1382 381147 (9AM-5PM UTC)
US/Canada: +1-617-245-0020 (9AM-5PM UTC)
Email: tech.support@ubiquigent.com

Email services@ubiquigent.com for enquiries regarding compound profiling and/or custom assay development services.

© Ubiquigent 2011. Unless otherwise noted, Ubiquigent, Ubiquigent logo and all other trademarks are the property of Ubiquigent, Ltd.

Limited Terms of Use: For research use only. Not for use in humans or for diagnostics. Not for distribution or resale in any form, modification or derivative OR for use in providing services to a third party (e.g. screening or profiling) without the written permission of Ubiquigent, Ltd.

Lot-specific COA version tracker: v1.0.0

UBE2Z (USE1) [GST-tagged]

E2 - FAT10 or Ubiquitin Conjugating Enzyme

Alternate Names: UBA6-Specific E2; USE1

Cat. No. 62-0060-020
Lot. No. 1418

Quantity: 20 µg
Storage: -70°C



FOR RESEARCH USE ONLY

NOT FOR USE IN HUMANS

CERTIFICATE OF ANALYSIS Page 2 of 2

Physical Characteristics

Continued from page 1

Protein Sequence:

MSPILGYWKIKGLVQPTRLLLEYLEEKYEEH
LYERDEGDKWRNKKFELGLEFPNLPYYIDGD
VKLTQSMAIIRYIADKHNMLGGCPKERAEISM
LEGAVLDIRYGVSRIAYSKDFETLKVDLFL
SKLPEMLKMFEDRLCHKTYLNGDHVTHPD
FMLYDALDVVLYMDPMCLDAFPKLVCFK
KRIEAIPQIDKYLKSSKYIAWPLQGQATFG
GGDHPPKSDLEVLFOGPLGSMESPTEEAATA
GAGAAGPGASSVAGVVGVS GSGGGFGPPFLPD
VWAAAAAAGGAGGPGSGLAPLPGLPPSAAA
GAALLSHWDPTLSSDWDGERTAPQCLLRKRDIM
SIYKEPPP GMFVVPD TVDMTKIHALITGPFDT
PYEGGFLLFVFRCPDYP IHPPRVKLM TGNNT
VRFNPNFYRNGKVCL SILGTWTGPAWSPAQ
SISSVLISIQSLMTENPYHNEPGFEQERHPGD
SKNYNECIRHETIRVAVCDMMEGKCPCEPL
RGVMEKSFLEYDYDFYEVACKDRLHLQGQTMQDPF
GEKRGHFDYQSLLMRLGLIRQVLERLHNENAE
MDS DSSSGTETDLHGSLRV

Tag (**bold text**): N-terminal GST

Protease cleavage site: PreScission™ (LEVLQ▼GP)

UBE2Z (regular text): Start **bold italics** (amino acid residues 1-354)

Accession number: NP_075567.2



www.ubiquigent.com
Dundee, Scotland, UK

ORDERS / SALES SUPPORT

International: +1-617-245-0003
US Toll-Free: 1-888-4E1E2E3 (1-888-431-3233)
Email: sales.support@ubiquigent.com

UK HQ and TECHNICAL SUPPORT

International: +44 (0) 1382 381147 (9AM-5PM UTC)
US/Canada: +1-617-245-0020 (9AM-5PM UTC)
Email: tech.support@ubiquigent.com

Email services@ubiquigent.com for enquiries regarding compound profiling and/or custom assay development services.

© Ubiquigent 2011. Unless otherwise noted, Ubiquigent, Ubiquigent logo and all other trademarks are the property of Ubiquigent, Ltd.

Limited Terms of Use: For research use only. Not for use in humans or for diagnostics. Not for distribution or resale in any form, modification or derivative OR for use in providing services to a third party (e.g. screening or profiling) without the written permission of Ubiquigent, Ltd.

Lot-specific COA version tracker: v1.0.0